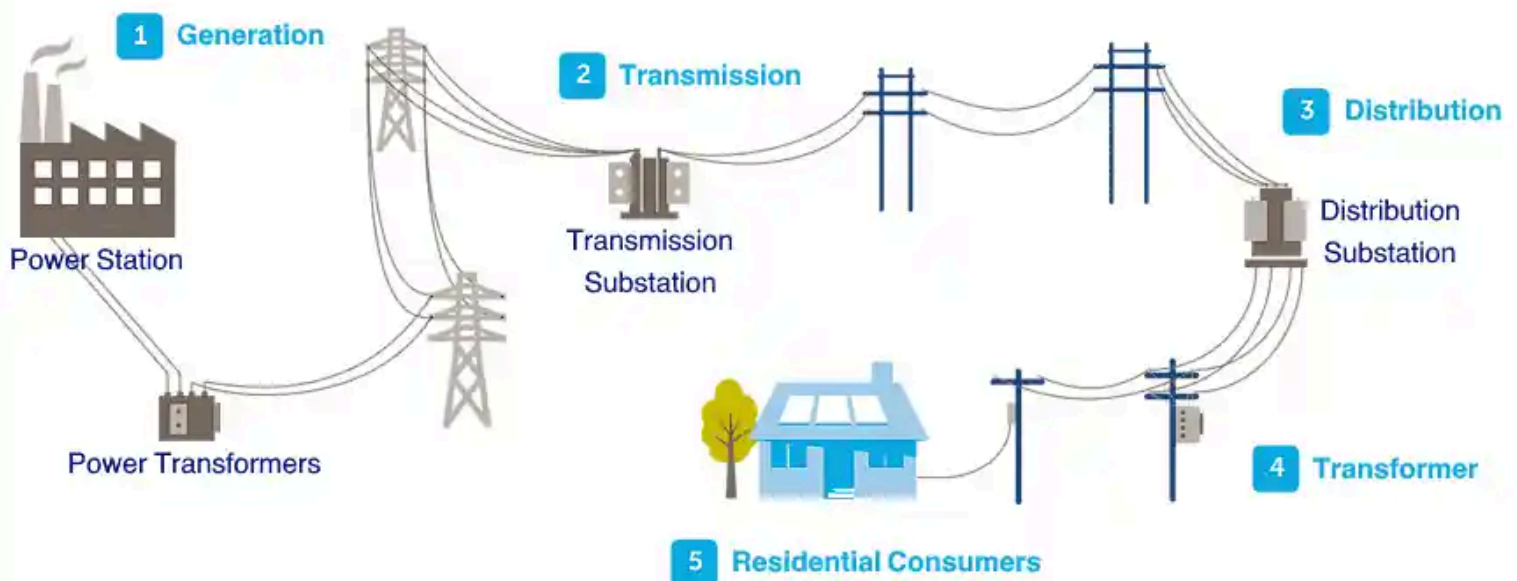


What Are the Four Types of Power Distribution Systems?

Power distribution systems are the backbone of modern electrical infrastructure, ensuring that electricity generated at power plants reaches homes, businesses, and industries efficiently and safely. Understanding the different types of power distribution systems is crucial for electrical engineers, contractors, and facility managers when planning or maintaining electrical networks. This article provides a comprehensive breakdown of the four primary types of power distribution systems.

Classification of Electric Power Distribution Network



1. Radial Distribution System

Overview:

The **radial system** is the simplest and most commonly used configuration in residential and rural areas. Power flows in a single direction from the substation to the end users.

Key Features:

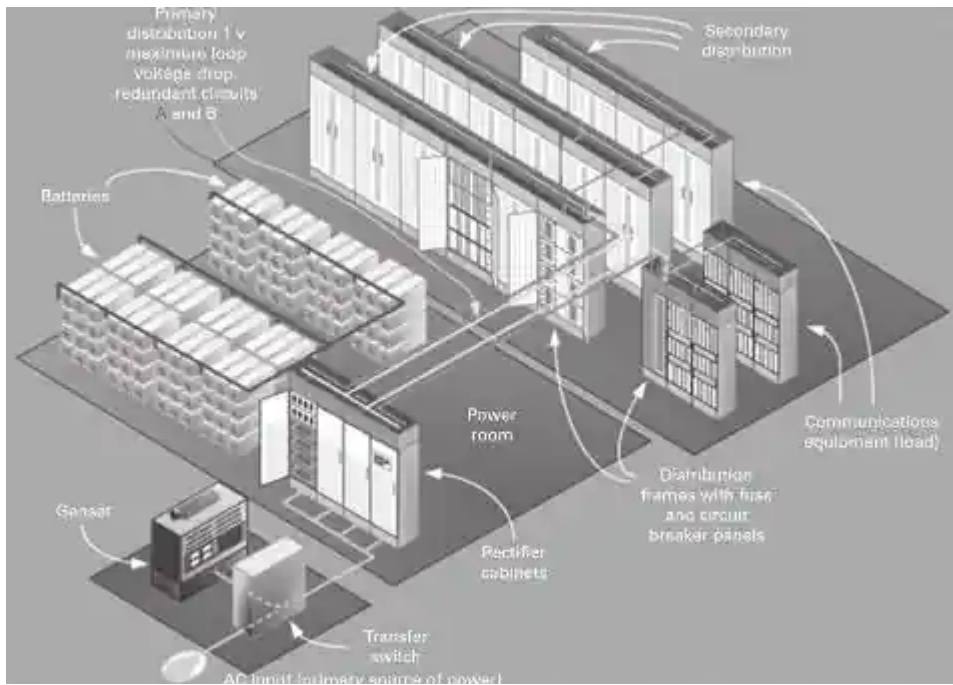
- One-way power flow
- Simple design and low cost
- Easy fault location

Applications:

- Residential zones
- Rural electrification

Limitations:

- No backup path for power
- Entire branch loses power during a fault



2. Ring Main Distribution System

Overview:

A **ring main system** forms a closed loop where the power can flow in either direction, providing redundancy and improved reliability.

Key Features:

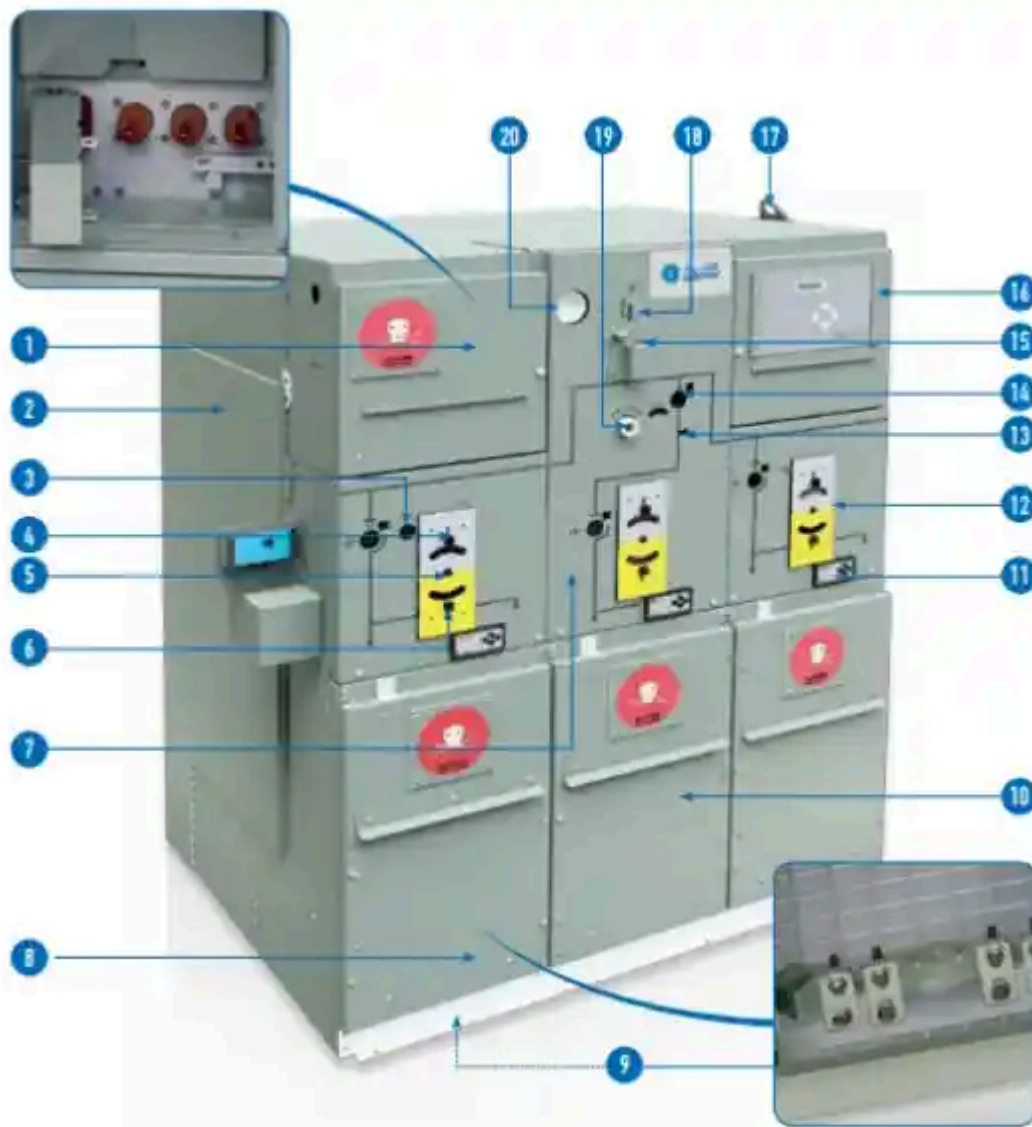
- Power can be rerouted
- Better load management
- Fault isolation without full outage

Applications:

- Urban residential complexes
- Industrial parks

Technical Reference:

- IEC 61936 and IEEE 141 standards recommend ring main units (RMUs) for medium-voltage applications.



3. Loop Distribution System

Overview:

The **loop system** is similar to the ring main but is open-ended, typically used in commercial and urban areas. It allows for selective switching between multiple sources.

Key Features:

- Partial redundancy
- Good for system maintenance without full shutdown
- Moderate cost and complexity

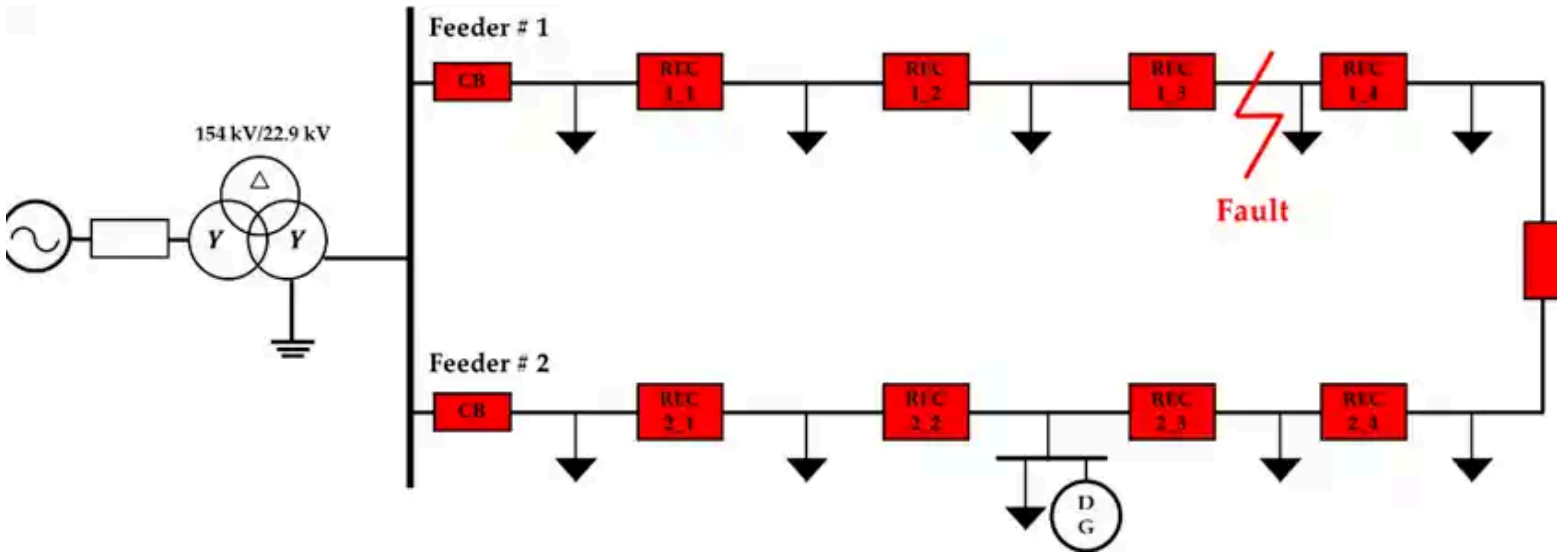
Applications:

- Commercial buildings
- Campus environments

- Mixed-use developments

Consideration:

- Requires well-designed switchgear for fault handling



4. Interconnected Distribution System

Overview:

The **interconnected system** is the most advanced and reliable setup. Multiple substations are connected through multiple feeders, allowing seamless power flow and redundancy.

Key Features:

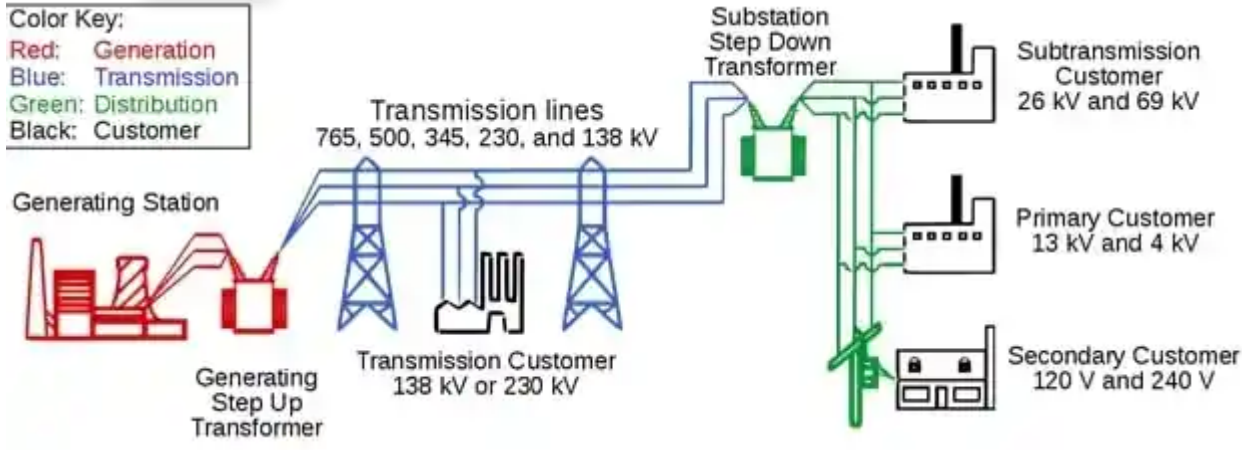
- Highest reliability and flexibility
- Ideal for critical infrastructure
- Complex design and higher cost

Applications:

- Large industrial zones
- Metropolitan grids
- Hospitals and data centers

Standard Compliance:

- IEEE Std 1547, IEEE 80, IEC 60076



Market Trends and Adoption

According to **IEEMA**, the adoption of interconnected and loop systems is rising in urban smart grid development. **ABB** and **Schneider Electric** offer modular and automated solutions for ring and loop systems, optimizing performance through SCADA integration.

The push toward **grid modernization** and **renewable energy integration** also favors more adaptive systems like loop and interconnected models. The **IEEE Smart Grid Report** highlights how distribution automation (DA) technologies are key to future-ready networks.

Comparison Table

Distribution Type	Cost	Reliability	Complexity	Best For
Radial	Low	Low	Simple	Rural & basic residential areas
Ring Main	Moderate	Medium	Medium	Urban & medium-load industries
Loop	Moderate	Medium-High	Medium	Commercial & mixed developments
Interconnected	High	High	High	Critical & urban power networks

Selection Guide

- Choose **Radial** for small-scale or rural applications with limited budget.
- Use **Ring Main** when uptime and maintainability are important.
- Opt for **Loop** in commercial setups that need operational flexibility.
- Go with **Interconnected** systems for mission-critical or city-wide reliability.

Frequently Asked Questions (FAQ)

Q1: Which power distribution system is most reliable?

The **interconnected distribution system** offers the highest reliability due to its multiple power sources and redundancy paths.

Q2: Are ring main units used in residential buildings?

Yes, especially in **urban apartment complexes** where medium-voltage reliability is essential.

Q3: Can a radial system be upgraded to a loop or ring main?

Yes, but it involves adding switchgear and reconfiguring feeder paths, often used during **urban infrastructure upgrades**.

Understanding the four types of power distribution systems—**Radial, Ring Main, Loop, and Interconnected**—is vital for modern power network planning. While each type has its strengths and suitable applications, choosing the right one depends on factors such as cost, criticality, scalability, and urban density.

Recommended products



630-2500Kva Ultra-
energy Saving Compact
European Substation



ZGS11-12 American Type
Prefabricated Substation



Exploded view of SRM6-12 stainless steel gas-insulated switchgear compartments



QUICK LINK

PRODUCTS

CONTACT INFO

Power
Distribution
System

Home
Products
About Us
Contact Us
Privacy Policy
Refund Policy

Compact
Substation
Electrical
Transformer
Cable Branching
Box
High Voltage
Components
Low Voltage
Switchgear
High Voltage
Switchgear

Address: 555 Station
Road, Liu Shi Town,
Yueqing City, Wenzhou City,
Zhejiang Province, China
Tel / WhatsApp: +86 180-
5886-8393
Email:
pine@zhengxi1983.com



Site Map

©2015 – PINEELE All rights reserved.

Reproduction of the material contained herein in any format or media without the express written permission of PINEELE Electric Group Co., Ltd. is prohibited.